

# MODEL 670

## SIDE MOUNT DRIVE

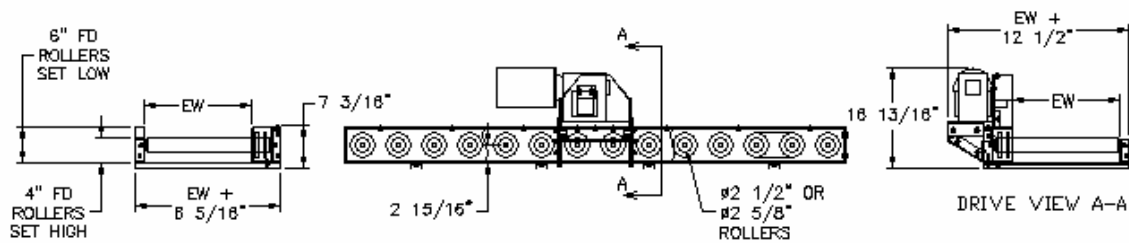
### CHAIN-DRIVEN LIVE ROLLER CONVEYOR

1700 Division Street, New London, WI 54961

Phone: (920) 982-4030; Fax: (920) 982-6800

Website: [www.nleco.com](http://www.nleco.com)

Chain driven live roller conveyors are used to convey heavy and bulky products like pallets and tires. This unit is built to convey weights up to 1000#/foot.



SIDE MOUNT DRIVE

## SIDE MOUNT DRIVE

1700 Division Street, New London, WI 54961

Phone: (800) 437-1994

Fax: (920) 982-6800

[www.nleco.com](http://www.nleco.com)